

**AMPH Antibody (C-term)**  
**Purified Rabbit Polyclonal Antibody (Pab)**  
**Catalog # AP21117a****Specification**

---

**AMPH Antibody (C-term) - Product Information**

Application	WB,E
Primary Accession	<a href="#">P49418</a>
Reactivity	Human
Host	Rabbit
Clonality	Polyclonal
Isotype	Rabbit IgG
Calculated MW	76257

**AMPH Antibody (C-term) - Additional Information****Gene ID** 273**Other Names**

Amphiphysin, AMPH, AMPH1

**Target/Specificity**

This AMPH antibody is generated from a rabbit immunized with a KLH conjugated synthetic peptide between 580-614 amino acids from the C-terminal region of human AMPH.

**Dilution**

WB~~1:1000

E~~Use at an assay dependent concentration.

**Format**

Purified polyclonal antibody supplied in PBS with 0.09% (W/V) sodium azide. This antibody is purified through a protein A column, followed by peptide affinity purification.

**Storage**

Maintain refrigerated at 2-8°C for up to 2 weeks. For long term storage store at -20°C in small aliquots to prevent freeze-thaw cycles.

**Precautions**

AMPH Antibody (C-term) is for research use only and not for use in diagnostic or therapeutic procedures.

**AMPH Antibody (C-term) - Protein Information****Name** AMPH**Synonyms** AMPH1**Function** May participate in mechanisms of regulated exocytosis in synapses and certain

endocrine cell types. May control the properties of the membrane associated cytoskeleton.

**Cellular Location**

Cytoplasmic vesicle, secretory vesicle, synaptic vesicle membrane; Peripheral membrane protein; Cytoplasmic side Cytoplasm, cytoskeleton

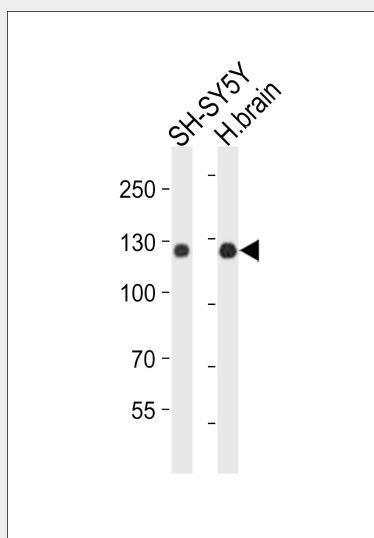
**Tissue Location**

Neurons, certain endocrine cell types and spermatocytes

**AMPH Antibody (C-term) - Protocols**

Provided below are standard protocols that you may find useful for product applications.

- [Western Blot](#)
- [Blocking Peptides](#)
- [Dot Blot](#)
- [Immunohistochemistry](#)
- [Immunofluorescence](#)
- [Immunoprecipitation](#)
- [Flow Cytometry](#)
- [Cell Culture](#)

**AMPH Antibody (C-term) - Images**

Western blot analysis of lysates from SH-SY5Y cell line, human brain tissue lysate (from left to right), using AMPH Antibody (C-term) (Cat. #AP21117a). AP21117a was diluted at 1:1000 at each lane. A goat anti-rabbit IgG H&L (HRP) at 1:10000 dilution was used as the secondary antibody. Lysates at 20ug per lane.

**AMPH Antibody (C-term) - Background**

May participate in mechanisms of regulated exocytosis in synapses and certain endocrine cell types. May control the properties of the membrane associated cytoskeleton.

**AMPH Antibody (C-term) - References**

David C., et al. FEBS Lett. 351:73-79 (1994).

Yamamoto R.,et al.Hum. Mol. Genet. 4:265-268(1995).

Floyd S.R.,et al.Mol. Med. 4:29-39(1998).

Scherer S.W.,et al.Science 300:767-772(2003).

Mural R.J.,et al.Submitted (JUL-2005) to the EMBL/GenBank/DDBJ databases.